

BNS38-W BAYNETS SAFETY SYSTEMS INSTALLATION INSTRUCTIONS

- Heavy Duty
- Dual Bay
- Catwalk

EXTREMELY IMPORTANT:



1. In preparation, be sure that all flammable products have been removed from the service bay and that all paint, grease and debris have been removed from the areas to be welded.
2. Use only a certified welding technician for Steps 2, 3 & 4 who is fully aware of all products specific to your facility and is knowledgeable in safety compliance required to perform these steps.
3. Follow the enclosed installation instructions exactly to insure the system meets all Occupational Safety and Health Administration specifications.

STEP 1 Unpack all items from box and identify the following:

- | | |
|--|--|
| A. Net (2 per installation) | E. Quick Links (quantity dependant on net length) |
| B. 3/8" Wire Cable length attached to cab-lug (4 per installation) | F. Snap Hooks, 120 mm (8 per installation) |
| C. Cable Clamps (12 per installation), Thimbles (4 per installation) | G. Mid-Bay Cable Pad Eyes with Snap Hooks, 80 mm (8 min) |
| D. Turnbuckles (2 per installation) | H. Mid-Lug (2 per installation) |

Tools Required: Tape measure and marker, two vice-grips, two crescent wrenches, torque wrench, cable shears, protective gloves and safety glasses.

STEP 2 Weld the number one and two cab-lug with the cable attached to the upper right and left corners in a horizontal position. See overall view and assembly details.

- Proceed to the opposite end of the bay and weld the number three and four cab-lugs in a horizontal position with the chamfered corners facing out.

STEP 3 Weld two mid-lugs to the side walls of the bay in a vertical position beneath the cat walk. Position the mid-lugs equal distant from each end of the bay.

The distance from each end to the mid-lug should be the length of one net. See overall view and assembly Detail B

STEP 4 Weld the mid-bay pad eyes to the side walls of the bay in-line with the corner cab-lugs. Space the pad eyes evenly with no more than 15 ft between pad eyes.

- Attach a 80 mm snap hook to each mid-bay pad eye. See overall view and assembly Detail C.

STEP 5 Run both cables from one end of the bay through the mid-bay snap hooks and through the bottom hole of the mid-lugs See overall view and assembly Detail D.

- Repeat Step 5 for the cables on the opposite end of the bay, passing them through the mid-bay snap hooks and the upper hole of the mid-lugs.

STEP 6 Position the two turnbuckles under the catwalk as shown in Detail B. The assembled turnbuckles will be staggered from each other to assure room for tightening.

- Unscrew both sides of each turnbuckle to its limit as shown in Detail E
- Twist open a thimble and attach it to the eye of the turnbuckle; twist closed using two pair of pliers or vice-grips. Repeat for all 4 thimbles.
- Place 3 cable clamps on the free end of each cable. Thread the cables through the turnbuckles, around the thimble and through the 3 cable clamps. See Detail F.
- Pull slack out of the wire by hand and tighten one clamp on each assembly to hold cable in place. Position the cable clamps correctly as shown in Details F & G.
- Tighten and torque the cable clamps to 30 ft-lb. Repeat with both cable assemblies.

STEP 7 Tighten each turnbuckle with two crescent wrenches, turning with one wrench while holding the cable stationary with the second wrench. Use care not to twist the cable. Tighten the turnbuckle until the cable can be moved no more than 2" vertically at the midway point of the cable.

STEP 8 Attach the net to the cable using quick links along the two long sides every 15" on center. Use the aluminum rings on the net as a guide. See overall view and Detail B.

STEP 9 Install the 120 mm snap hooks to each corner of the net. Secure the snap hooks to the cab-lugs and to the cross cables. The spring snap hooks will stay affixed to the net assembly.

- When a technician moves the net, they will unsnap the net from the cab-lugs to gain access to either end of the vehicle. See overall view.

STEP 10 Following installation, your BayNets Safety System should be checked on a regular schedule for tightness of all cables and clamps. The netting should be replaced if it becomes torn or stretched out of shape.



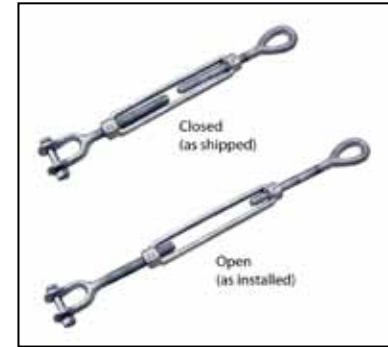
Net
(2 per installation)



3/8" Wire Cable length
attached to cab-lug
(4 per installation)



Cable Clamps
(12 per installation),
Thimbles
(4 per installation)



Turnbuckle
(2 per installation)



Quick Links
(quantity dependent
on net length)



Mid-Bay Cable Pad Eyes
with 80 mm Snap Hooks
(8 min per installation)



120 mm Snap Hooks
(8 per installation)



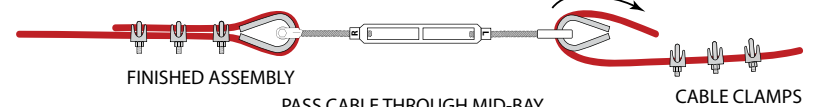
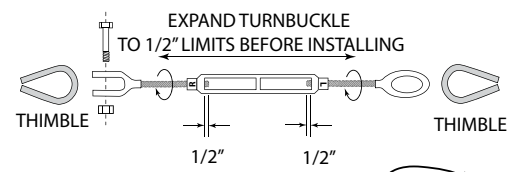
Mid-Lug
(2 per installation)

InCord BAYNETS provide an easy, effective tool for open pit safety and promote safer work habits in the hazardous area of your service center.

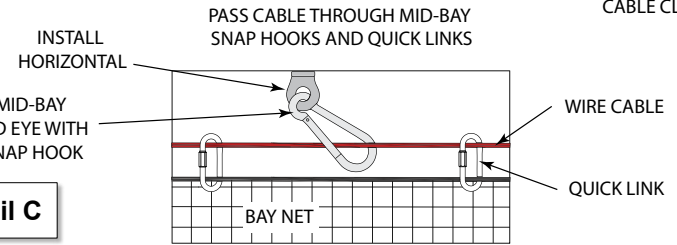
BAYNETS are designed to catch and cradle a person falling into the floor opening. They are fabricated of specially treated, petroleum-resistant synthetic web, installed with aircraft cable and hardware. Once installed, the patented BAYNETS Safety System® has a tensile strength of over 3 tons.



Detail E

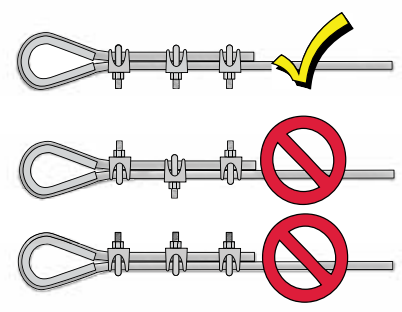


Detail F

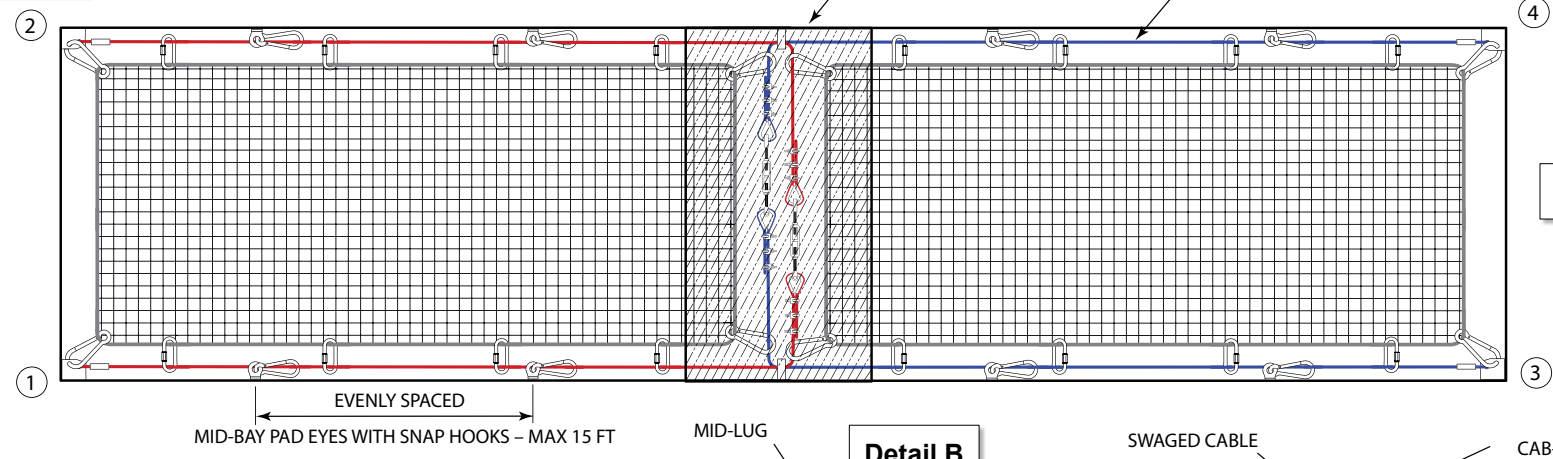


Detail C

INSTALL CORRECTLY AND TORQUE TO 30 FT-LB

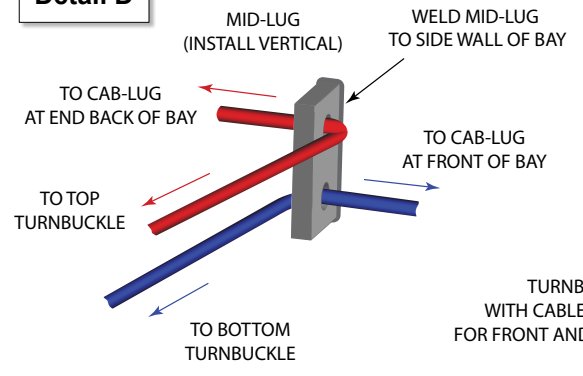


Detail G

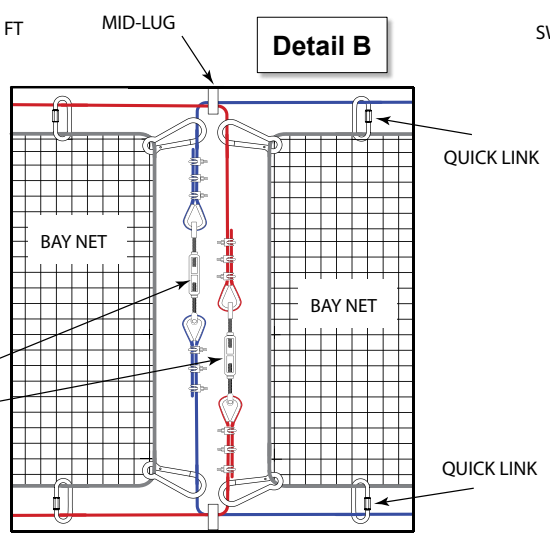


Main View

Detail D



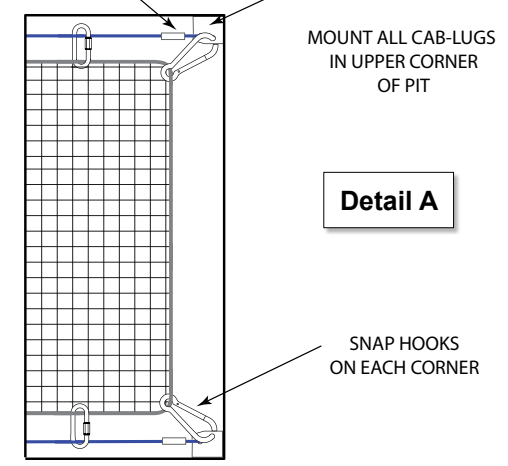
Detail B



SWAGED CABLE

CAB-LUG WITH CABLE
MOUNT ALL CAB-LUGS IN UPPER CORNER OF PIT

Detail A



Thank you for purchasing the patented BAYNETS Safety System. We are confident that you will be very pleased with your finished installation and will soon agree that the BAYNETS System is the best safety system for your dollar.

Please read the enclosed installation instructions to verify that all the required hardware has been included. Contact us immediately at 800-331-0731 if any contents are damaged or missing. Also, we welcome you to call with any feedback, questions or comments.

Thank you for your order. We look forward to a long and safe business relationship.



BAYNETS Safety System Specifications

Netting	5mm High Tenacity Multi-filament Polypropylene Raschel netting with a burst strength of 3.2 kN
Mesh	2.5 inch (60 mm) square
Rope	1/2 inch diameter Steel-Line™ synthetic rope with a 5700 lb tensile strength. The rope woven through the perimeter mesh of the net and attached to the rope using aluminum pressed rings, 15 inch o.c.
Cable	3/8 inch 7x19 galvanized aircraft cable (7,000 lb breaking strength)
Quick Link.....	3/8 inch at 15 inch intervals (3,400 lb safe working load)
Spring Snap Hook	7/16 inch (2,450 safe working load)
Frame	The frame for the net is made from 3/8 inch aircraft cable and consists of #2 pad eyes and cab-lugs (5,000 safe working load) with 1/2 inch x 6 inch J&E turnbuckles (2,000 safe working load) at one end and 3 Crosby clips at the termination end. The frame is supported with additional pad eyes and snap hooks at approximately 15' o.c. to reduce the sag of long cable runs.
Overall System	The resultant safe working load exceeds normal standards by a safety ratio of 10 to 1 (approximately 6,900 lb breaking strength)

Certificate of Warranty

This Certificate of Warranty for the specified model BAYNETS Safety System becomes valid and Warrants to the purchaser to be free from defects in workmanship and materials for a period of 12 months from date of receipt of equipment. This warranty does not cover failures resulting from misuse, abuse, and alterations of the BAYNETS Safety System with improper components or failure to comply with the proper installation as set forth in the "Instructions for Proper Installation".

To make claim under this warranty, the purchaser must notify BAYNETS, at its office at 226 Upton Road in Colchester, Connecticut. The claim will be evaluated and if bona fide, further instructions will be issued. BAYNETS obligation under this warranty is limited to the option of repairing at its plant or supplying a replacement for component part(s) of the BAYNET System.

There is no other express warranty. Implied warranties, including those of merchantability and fitness for a particular purpose are limited to twelve months from the purchase and to the extent permitted by law any and all implied warranties are excluded. This is the exclusive remedy and liability for consequential and incidental damages under any and all warranties are excluded to the extent exclusion is permitted by law. Some states do not allow limitations on how long an implied warranty lasts, or the limitation or exclusion or consequential or incidental damages, so the above limitations or exclusions may not apply to you.

This warranty gives you specific legal rights and you may also have other rights, which vary from state to state.



226 Upton Road
Colchester, CT 06415
800-331-0731
860-537-1414

www.baynets.com
email info@baynets.com

BNS38-W BayNets Safety System
Installation Instructions 115
11-10 Rev. F
Copyright © 2010 INCORD